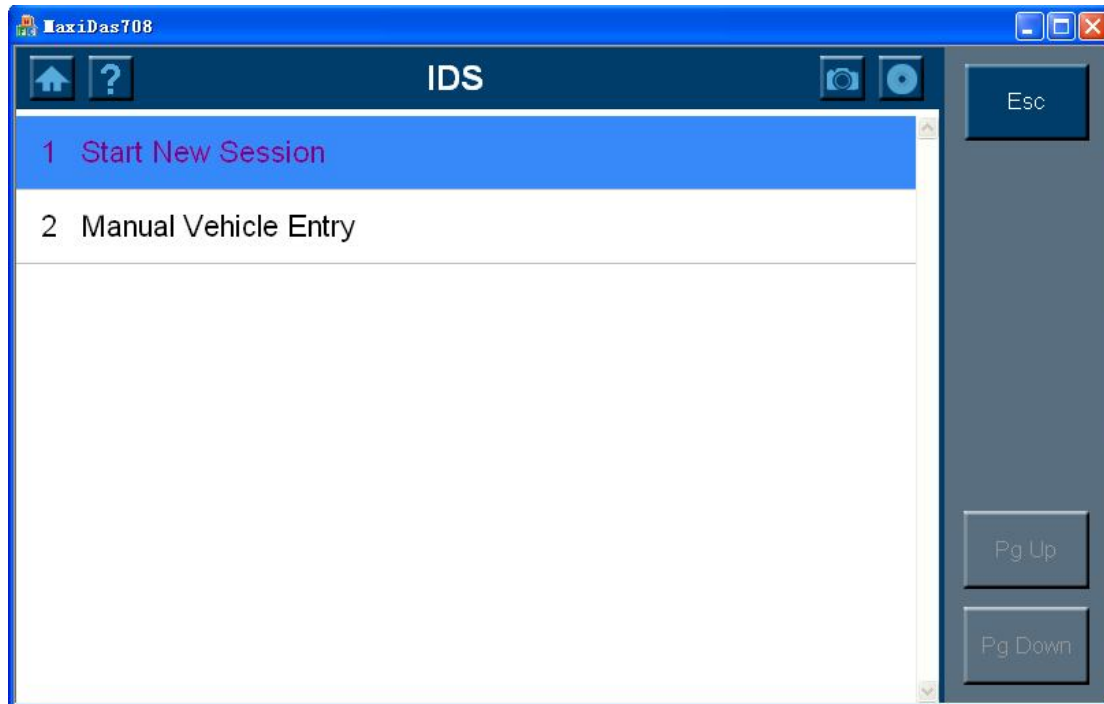

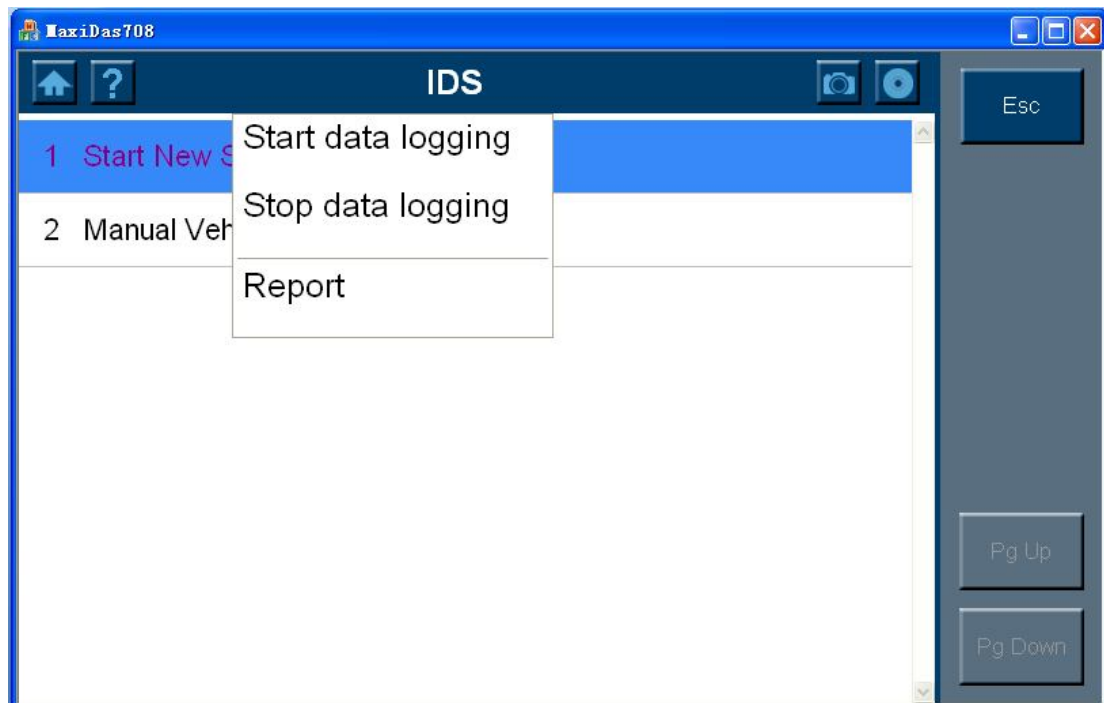


Data Record Instruction

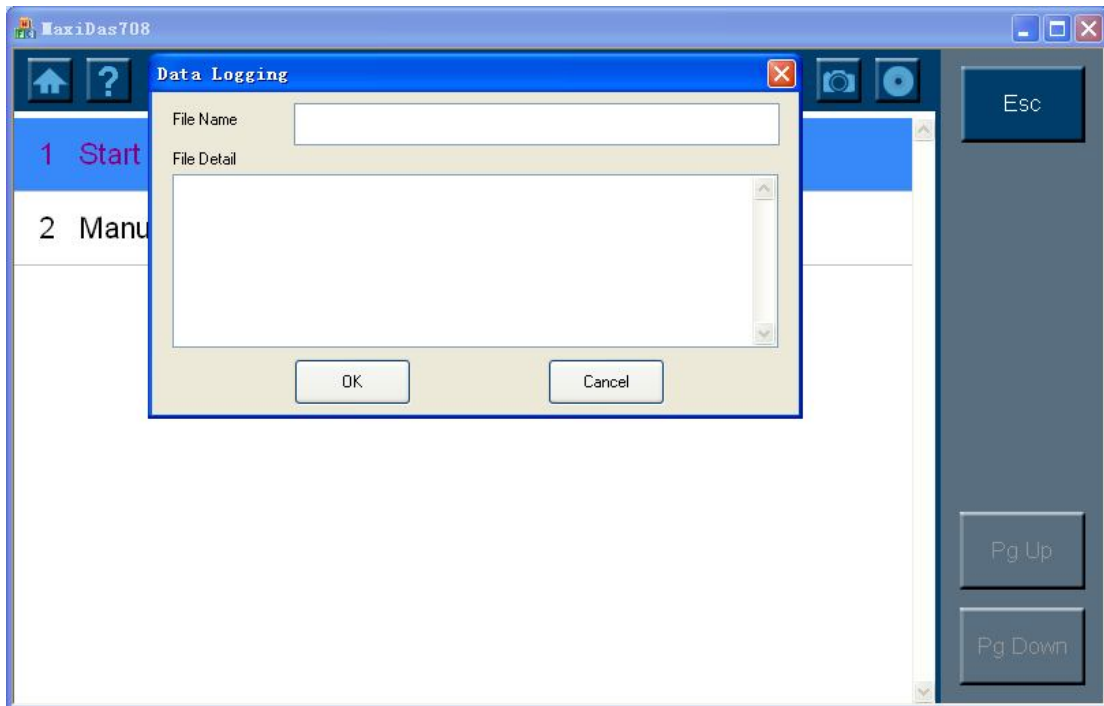
Initial Screen:



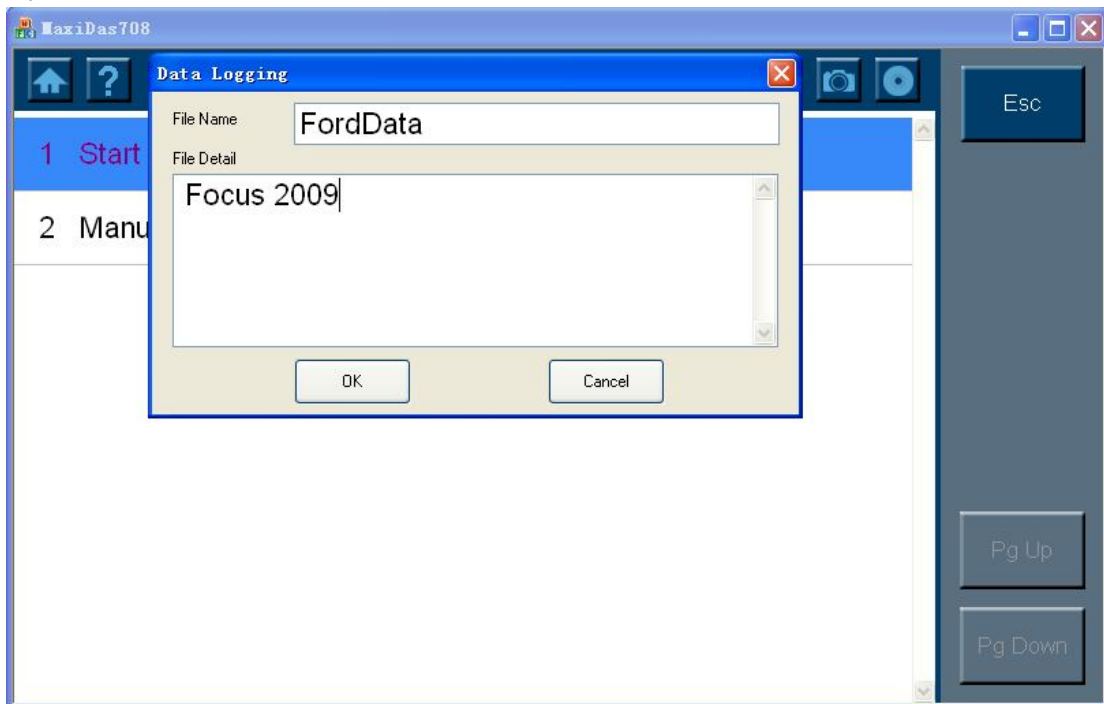
Click "  ", then appears below screen



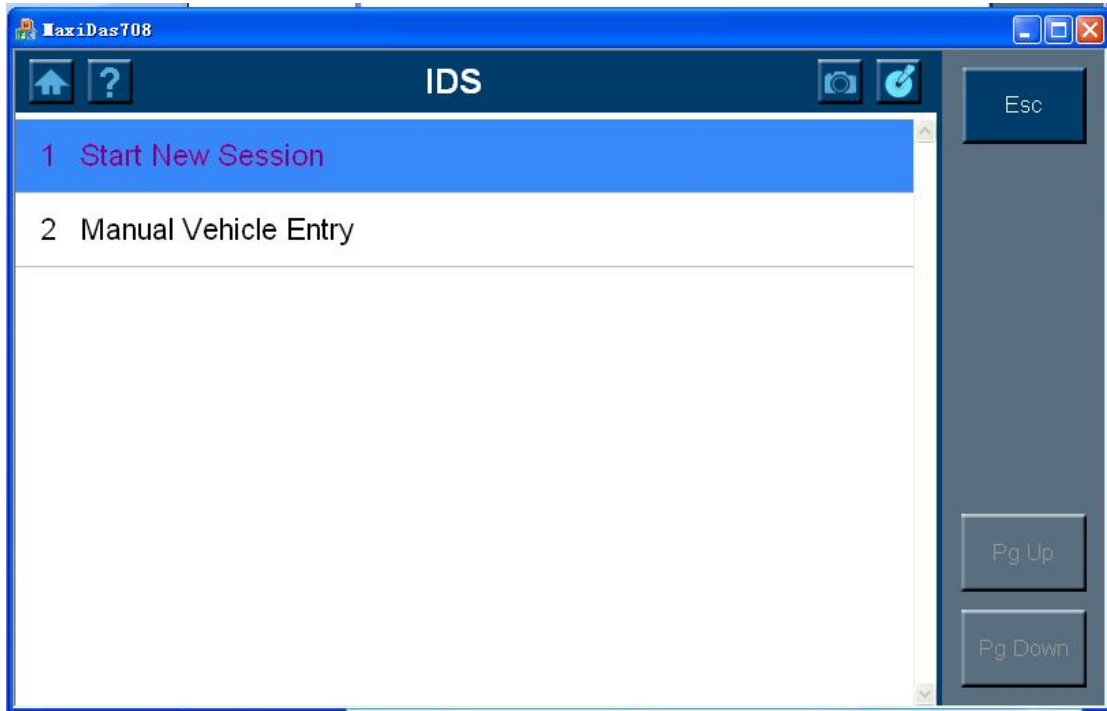
Select "Start data logging", then appears below screen





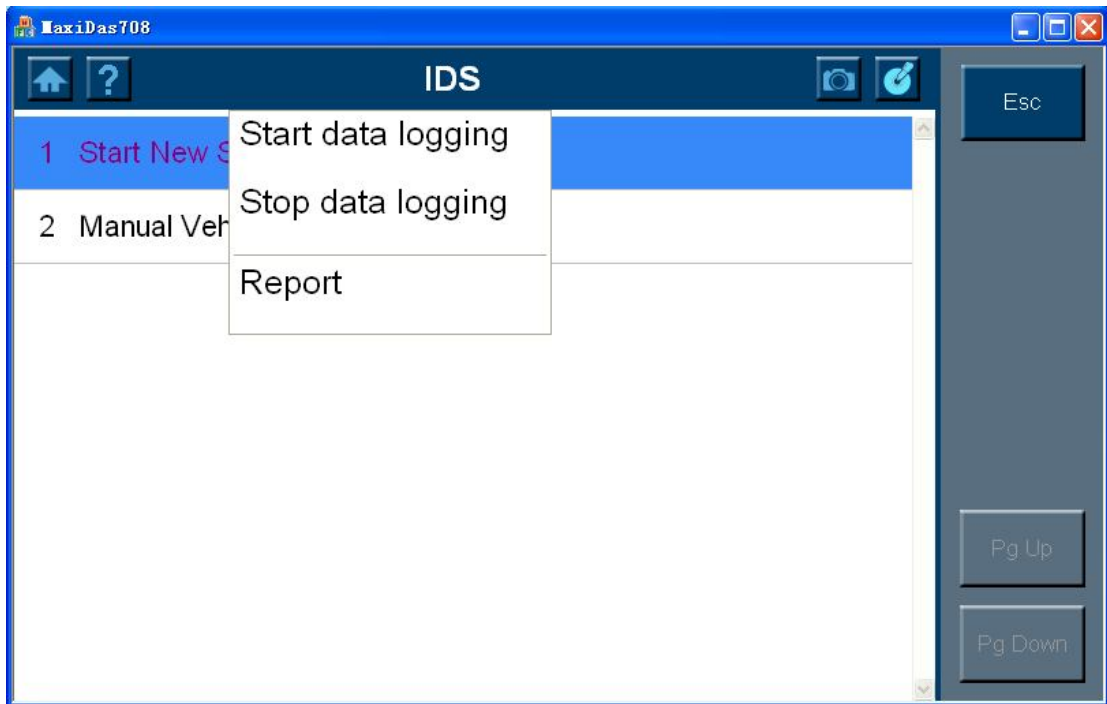
Input File Name and File Detail



Click "OK", start recording data



The icon becomes "  " start testing, after testing finishes, click "  "



Select "Stop data logging", finish data record

The file is recorded in the SD card \SCAN\Make\USA\Ford\CommData, file "FordData.dat"

Please email this file to us