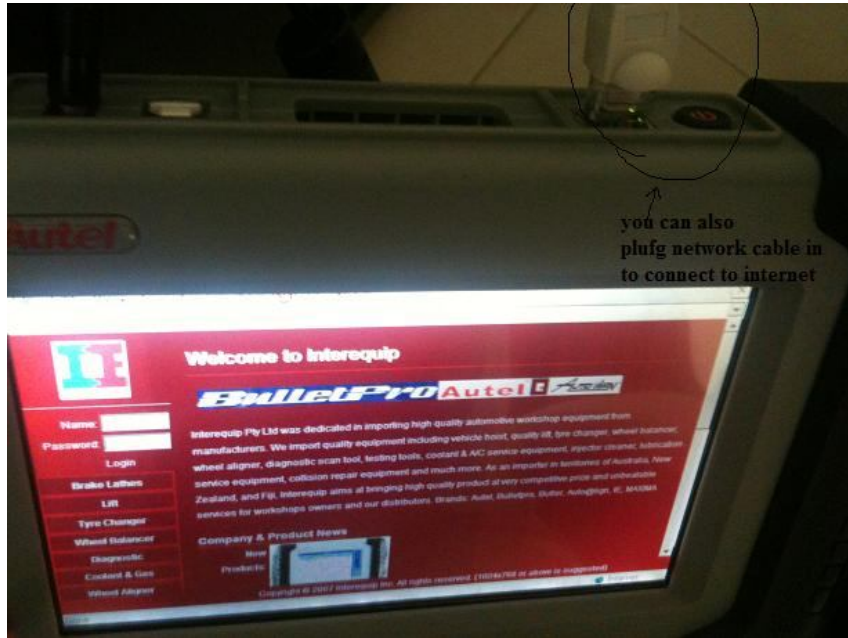


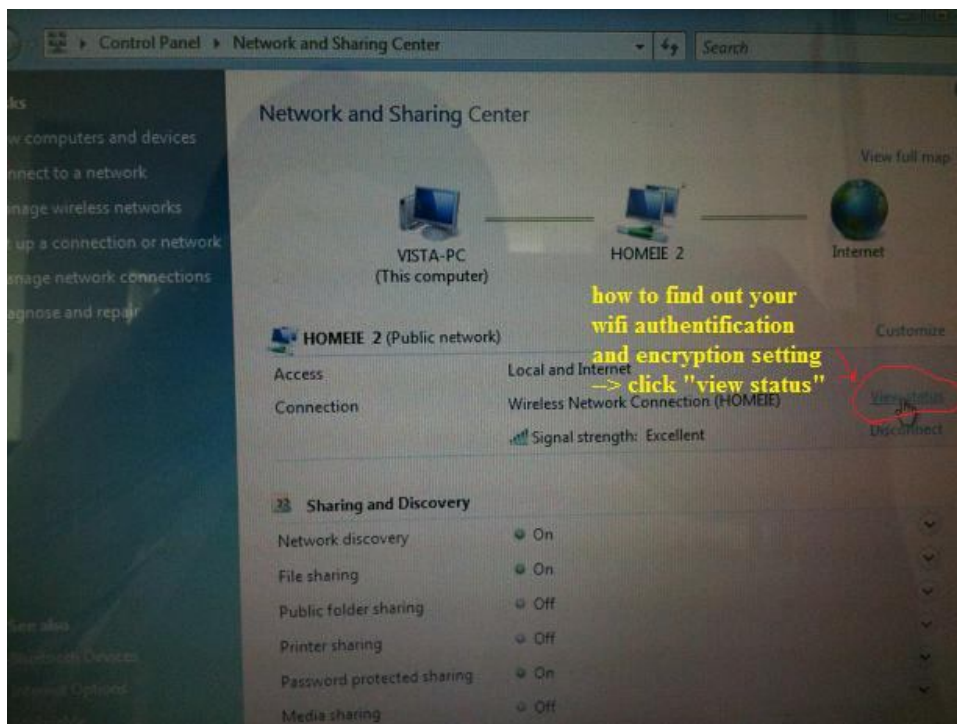
How to connect DS708 scanner to Internet?

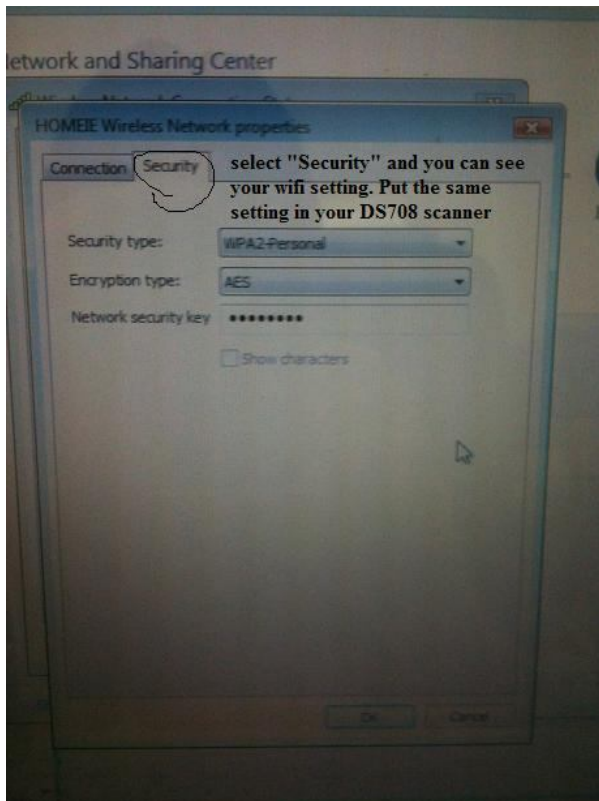
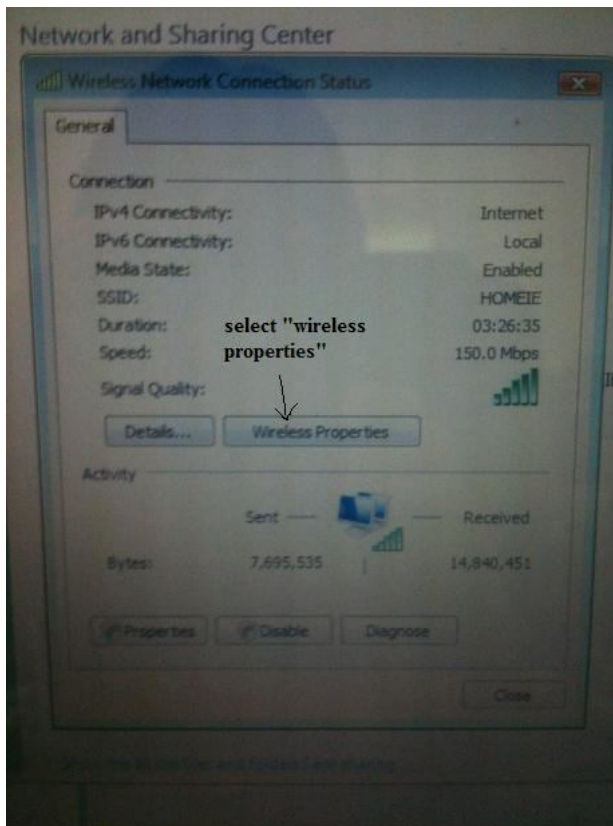
You can plug in the network cable to DS708 scanner



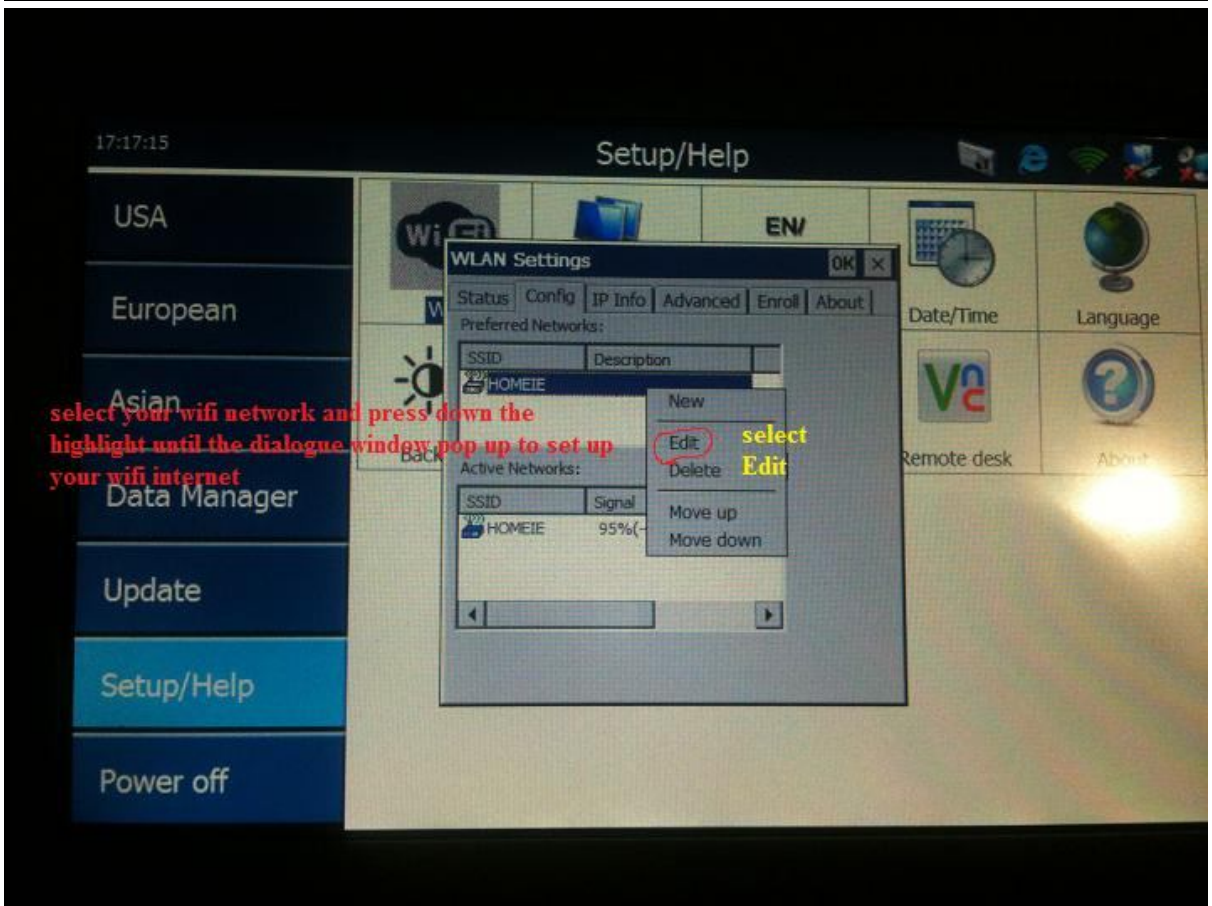
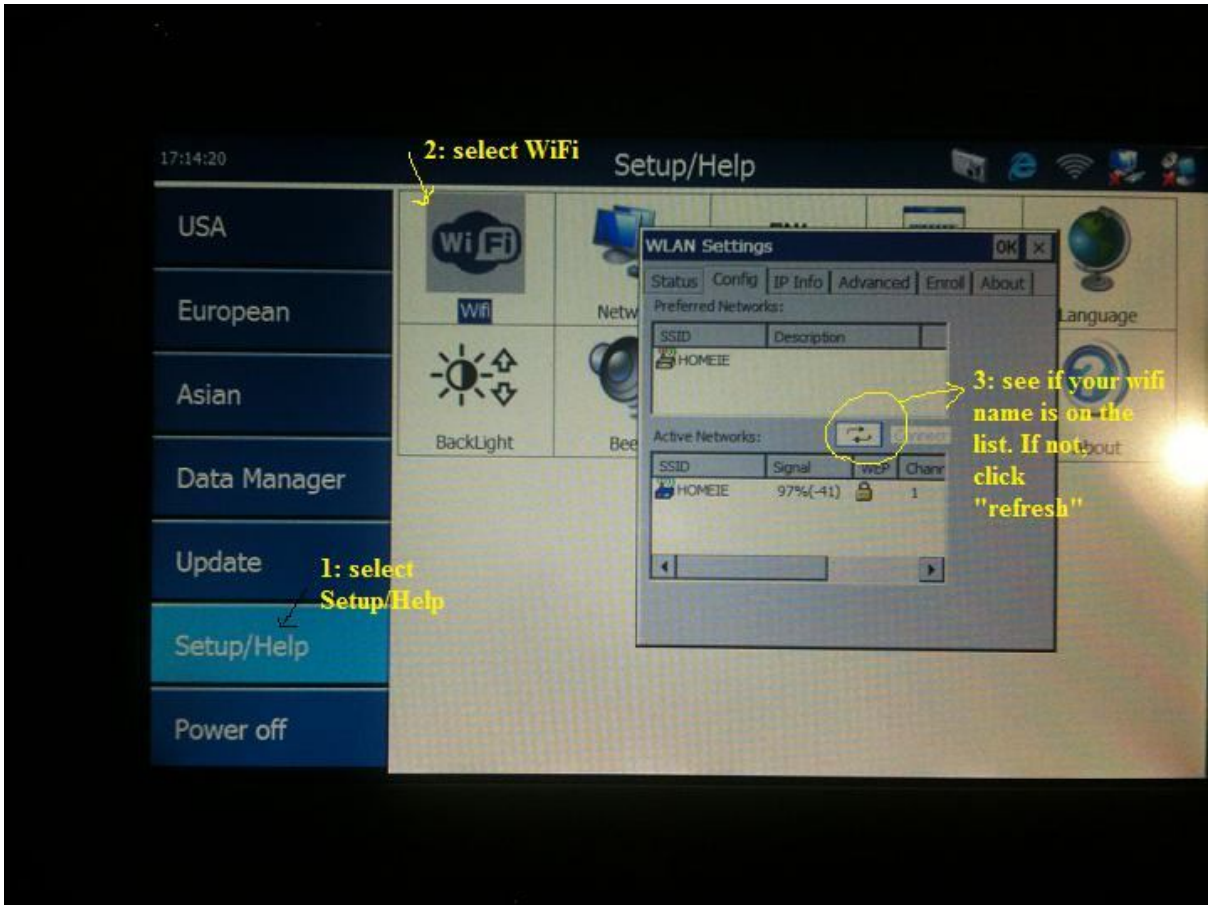
Or connect DS708 scanner through Wifi internet

1. Find out your wifi setting





2. Turn on your DS708 scanner. Go to → Setup/Help → Wifi



17:17:38

Setup/Help

USA

European

Asian

Data Manager

Update

Setup/Help

Power off

WLAN Settings authentication type

WLAN Settings type

General Authentication Encryption

Authentication: WPA2-PSK

Enable Encryption

Enable network access with 802.1x

EAP Type: TLS

Properties

setup your wifi

authentication

type

Date/Time

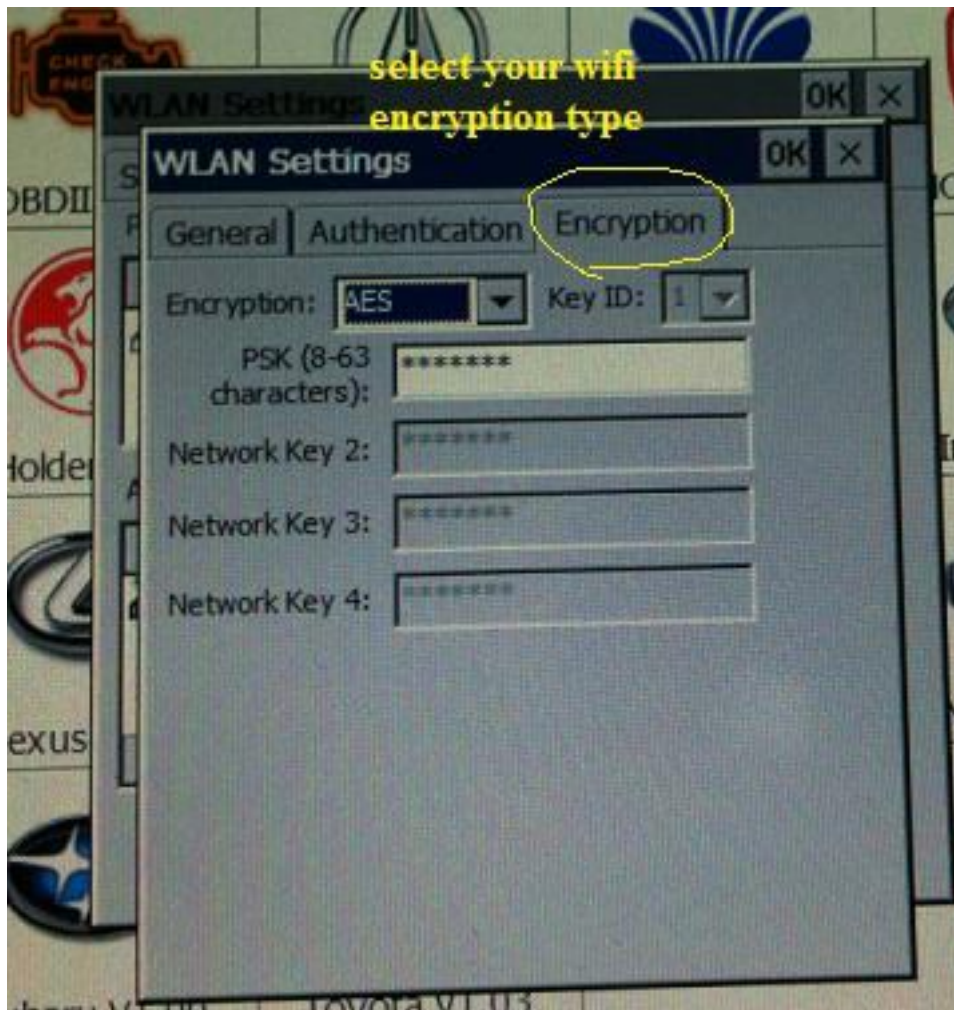
Language

Vc

Remote desk

About

select your wifi
encryption type



hit connect and linked to wifi. Open the Explorer browser to view website



Note:

You only need to set up your wifi setting at the first time of connection (from "active network list" to "preferred network list"). Afterwards, the setting will be stored as "preferred network" and just select your wifi highlight and hit "connect" and you can use the wifi internet through the DS708 scanner.